

YARBO

 **Save This Guide**

# Quick Fixes for Snowstorm Errors

Mid-storm is the worst time to search through a manual. We've summarized the most common **Error Codes** and the **#1 Reason** your auger might stop spinning.



**Need a visual guide on replacing the Shear Pin? Link in the comments below.**

## Slide 2 Auger Errors (OA Series)



**Code: OA001**

**Problem:** Frozen or Obstructed

**Fix:** Check for ice/debris

➡ Tap **"Clear Error"** in the App Controller

**Code: OA002 / OA003**

**Problem:** Frozen or Obstructed

**Fix:** Let Yarbo rest briefly before resuming.

### Slide 3 Chute & Deflector Issues

● Chute ● Deflector



**Code: OC001 – OC003**

**Part: Chute Status: Blocked**

**Fix: Clear blockage**

➡ Tap **“Clear Error”** in the App Controller

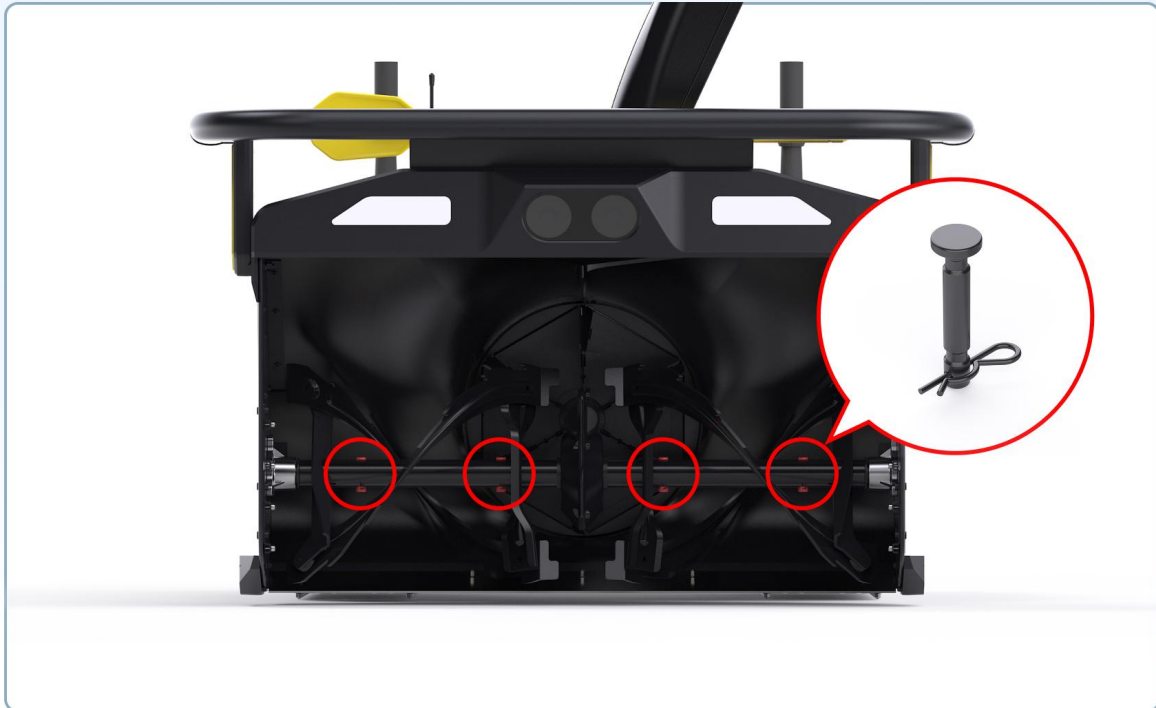
**Code: OD001 – OD003**

**Part: Deflector Status: Obstructed**

**Fix: Clear blockage**

➡ Tap **“Clear Error”** in the App Controller

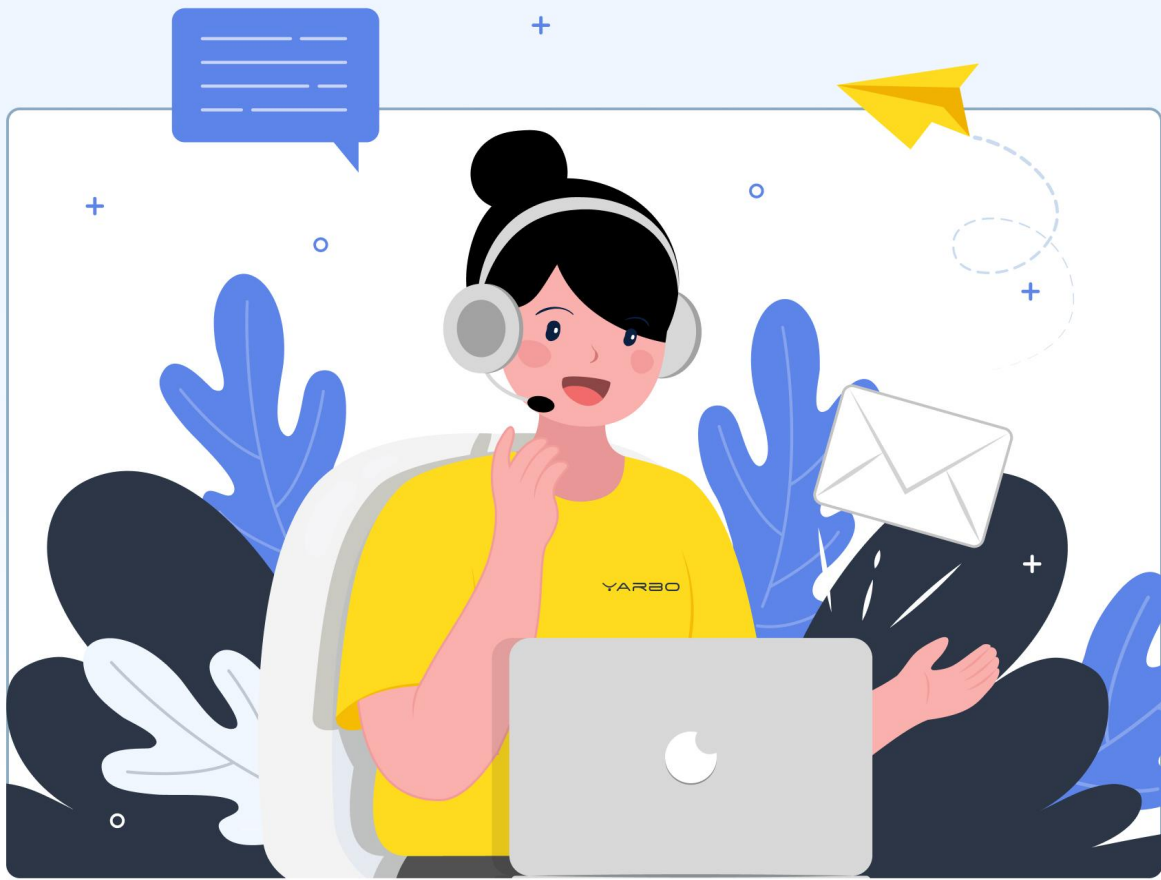
## Slide 4 FAQ – Shear Pin



**Q Auger NOT spinning? A Check the Shear Pin.**

**Why:** It connects the auger to the shaft. If it's broken or lost, the auger won't work.

**Solution:** Replace with a spare pin. (Check comments for video guide)



## Slide 5 **Still Stuck?**

**If you've cleared the blockage and the error persists, we are here to help.**



**Email:** [support@yarbo.com](mailto:support@yarbo.com)  
**Phone:** +1 (631) 818-1850

YARBO

[www.yarbo.com](http://www.yarbo.com)